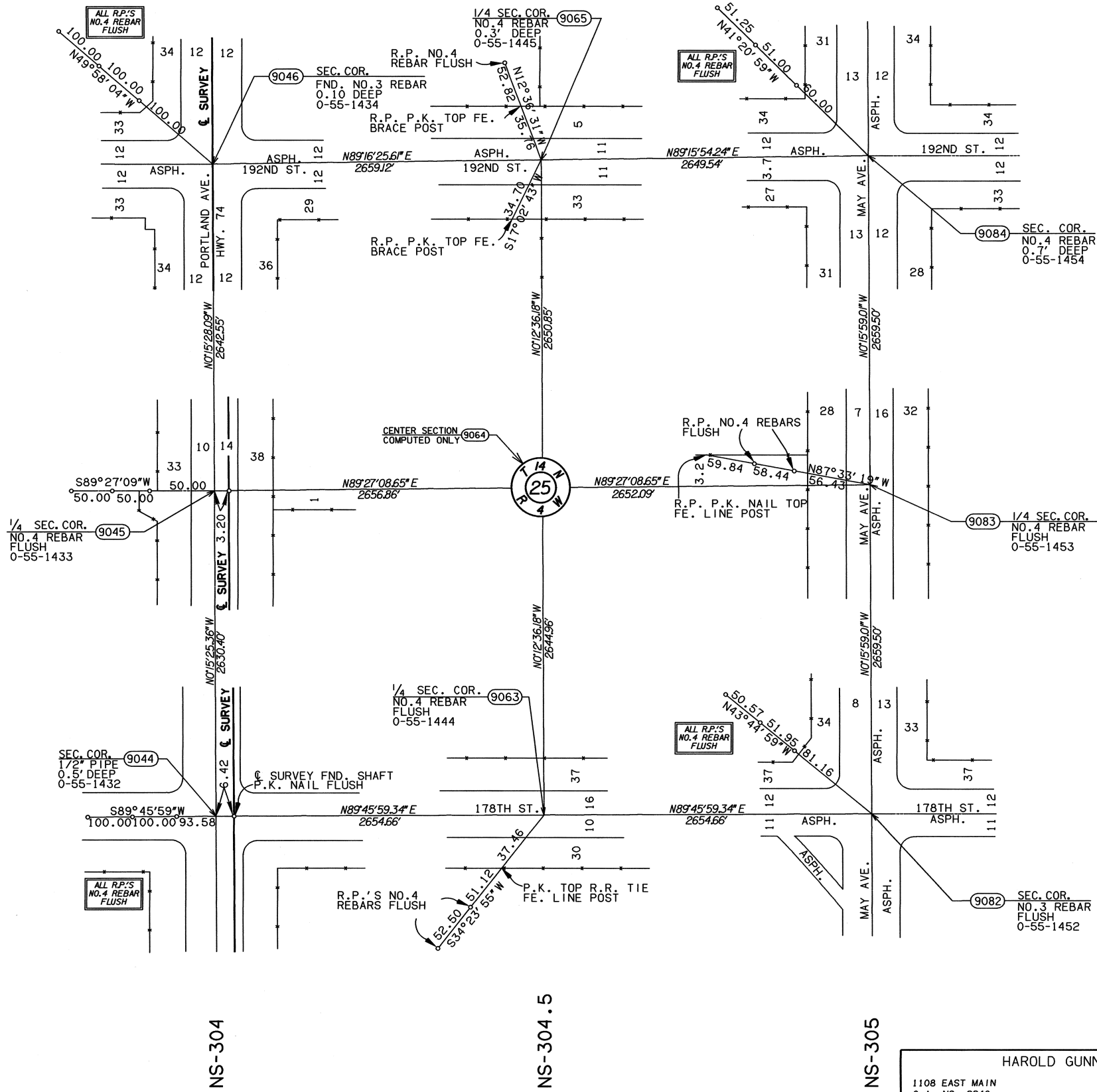
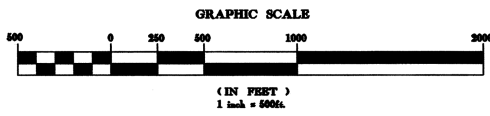


- LAND CORNER HISTORY NOTES -

9044	FND. 1/2" PIPE 0.5 FEET DEEP SET BY UNKNOWN PARTIES WHICH FITS S.W.O. 2374(6) FIELD NOTES. CHECKED & USED MONUMENT FND. ON THIS SURVEY.
9045	SET NO. 4 REBAR WITH YELLOW PLASTIC CAP STAMPED "GUNNING SURVEYING" FROM REFERENCES SHOWN ON S.W.O. 2374(6) FIELD NOTES.
9046	FND. NO. 3 REBAR 0.3 FEET DEEP FILED BY BRYAN COON P.L.S. 1276 OCTOBER 3, 1995 WHICH FITS S.W.O. 2374(6) FIELD NOTES. CHECKED AND USED MONUMENT FND. ON THIS SURVEY.
9063	FND. P.K. NAIL FLUSH SET BY UNKNOWN PARTIES WHICH IS ON LINE & EQUAL DISTANCE BETWEEN SECTION CORNER 1/2 MILE WEST & 1/2 MILE. REPLACED MONUMENT FND. WITH NO. 4 REBAR FLUSH AND PLACED A YELLOW PLASTIC CAP STAMPED "GUNNING SURVEYING" ON MONUMENT SET. CHECK & USED POSITION OF MONUMENT FND. ON THIS SURVEY.
9065	FND. NO. 4 REBAR 0.3 FEET DEEP FILED BY BRYAN COON P.L.S. 1276 OCTOBER 3, 1995. CHECKED & USED MONUMENT FND. ON THIS SURVEY.
9082	FND. NO. 3 REBAR FLUSH FILED BY CHRISTOPHER JOHNSON P.L.S. 1007 FEBRUARY 14, 1985 & BRYAN COON P.L.S. 1276 AUGUST 1, 1996. CHECKED & USED MONUMENT FND. ON THIS SURVEY.
9083	SET NO. 4 REBAR WITH YELLOW PLASTIC CAP STAMPED "GUNNING SURVEYING" FLUSH ON LINE & EQUAL DISTANCE BETWEEN SECTION CORNER 1/2 MILE N. & 1/2 MILE S.
9084	FND. NO. 4 REBAR 0.7 FEET DEEP WHICH FITS REFERENCES ON C.C.R. FILED BY BRYAN COON P.L.S. 1276 OCTOBER 3, 1995. CHECKED & USED MONUMENT FND. ON THIS SURVEY.

Angle Of Variance  
At Pt. No. 9064  
X= 2094643.1791  
Y= 240676.4309  
Lat. = 33°59'38.02"  
Long. = 97°35'04.33"  
θ = 00°14'09.0"



OKLAHOMA DEPARTMENT OF TRANSPORTATION						
FED. ROAD DIST. NO.	STATE	PROJ. NO.	FISCAL YEAR	SHEET NO.	TOTAL SHEETS	
6	OKLA.					
DESCRIPTION				REVISIONS		DATE

EW-93

EW-93.5

EW-94

HAROLD GUNNING SURVEYING			
1108 EAST MAIN C.A. NO. 2248		CORDELL, OKLAHOMA 73632 EXPIRATION DATE: 6-30-2005	
PLS	GHG	OKLAHOMA DEPARTMENT OF TRANSPORTATION SURVEY DIVISION	
DRAWN	TRK	<b>SURVEY DATA SHEET</b>	
CHECKED		SHEET 34 OF 43	
APPROVED			
CREW		SWO 3868 (1) PROJECT NO. 14964(08) SHEET NO. S17	